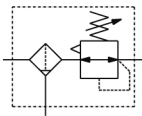


AW20(*)-B to AW60(*)-B, Filter Regulator & Filter Regulator w/Backflow Function AW30-F03DE-B

Data Sheet

This combination Filter/ Regulator minimizes space and piping by integrating the 2 units into one. Standard features include a relieving regulator, which can be quickly locked by pushing down on the adjustment knob. There are many options, which include gauges, auto-drain, metal bowl and covers, different set pressures, etc. The AW-B is part of the family of modular air preparation units and can be combined with other similar sized products. This series is available in 3 body sizes with piping from 1/8 to 3/4 in Rc, NPT or G thread types. Integrated filter and regulator units save space and require less piping. With the backflow function it incorporates a mechanism to exhaust the air pressure in the outlet side reliably and quickly.

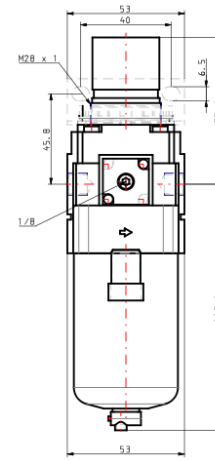
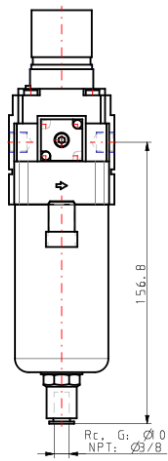
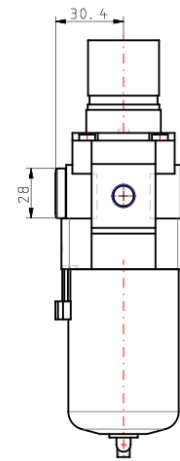
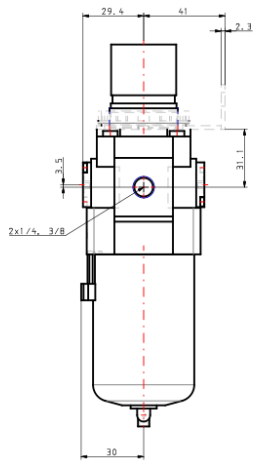


Air combination, Air filter and regulator

Standard Specifications

Made to Order 1	None
Body Size	30
Backflow Function	None
Thread	G
Port	3/8
Option	D + E
Semi-standard 1	Standard
Semi-standard 2	Standard
Made to Order 2	None
Pressure medium	Air
Maximum temperature of pressure medium	60 °C
Minimum temperature of pressure medium	-5 °C [without condensation]
Maximum operating pressure	1.0 MPa
Proof pressure	1.5 MPa
Maximum ambient temperature	60 °C
Minimum ambient temperature	-5 °C [without condensation]
Conform to the European RoHS Directive	Conform
Approvals	No need
Bowl Material	Polycarbonate
Bowl Guard	Standard (Polycarbonate)
Drain Capacity	25 cm ³
Element nominal filtration rating	5 µm
Weight	0.425 kg

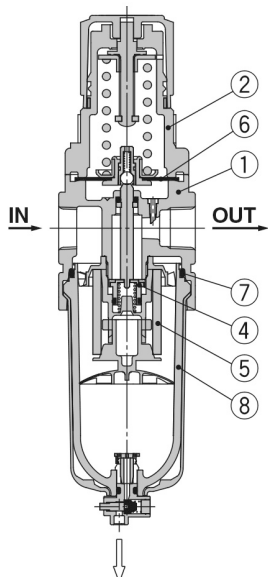
Dimensions



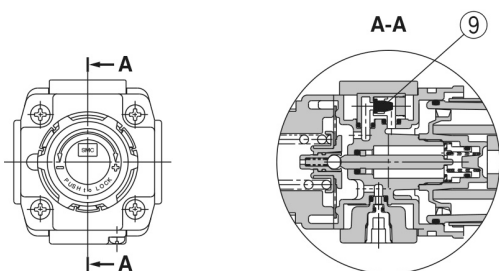
Constructions

Construction

AW30(K)-B/AW40(K)-B



AW20K-B to AW60K-B (Filter Regulator with Backflow Function)



Component Parts

No.	Description	Material	Model	Colour
1	Body	Aluminium die-cast	AW20-B to AW60-B	White
2	Bonnet	Polyacetal	AW20-B to AW40-B	White
		Aluminium die-cast	AW60-B	White
3	Housing	Aluminium die-cast	AW60-B	White

Replacement Parts

No.	Description	Material	Part no.		
			AW30(K)-B	AW40(K)-B	AW40(K)-06-B
4	Valve assembly	Brass, HNBR	AW30P-340AS	AW40P-340AS	
5	Filter element	Non-woven fabric	AF30P-060S	AF40P-060S	
6	Diaphragm assembly	Weatherable NBR	AR30P-150AS	AR40P-150AS	
7	Bowl seal	NBR	C32FP-260S	C42FP-260S	
8	Bowl assembly *1	Polycarbonate	C3SF-A*2	C4SF-A*2	
9	Check valve assembly *3	—	AR23KP-020AS		

*1 Bowl assembly includes the bowl O-ring.

Please consult with SMC separately for psi and °F unit display specifications.

*2 Bowl assembly for the AW30(K)-B to AW60(K)-B models comes with a bowl guard (Material: Polycarbonate).

*3 Check valve assembly is applicable for a filter regulator with backflow function (AW20(K)-B to AW60(K)-B) only.

Assembly of a check valve cover, check valve body assembly and 2 mounting screws

Additional information

Catalogue

[AC-B-B_EU.pdf](#)

Installation Manuals

[IM_AW_SMU06EN-A.pdf](#)